

REINVENTING EVE  
JAKARTA - *Isa.Art.Advisory*





ARTIST'S NAME  
TITLE  
MATERIALS  
YEAR



ARTIST'S NAME  
TITLE  
MATERIALS  
YEAR



ARTIST'S NAME  
TITLE  
MATERIALS  
YEAR

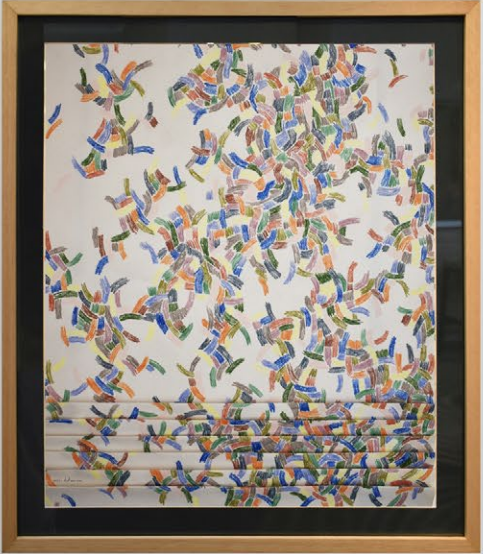




ARTIST'S NAME  
TITLE  
MATERIALS  
DATE

ARTIST'S NAME  
TITLE  
MATERIALS  
DATE

ARTIST'S NAME  
TITLE  
MATERIALS  
DATE



QR code and small text label.



## REALITY FACT

When reality is too distressing to face, we create a new one,  
one that is more sensitive, more nuanced.  
We hide part of ourselves in these imaginary spaces to mitigate  
our experience of the human condition.

We try our best to find a balance between our  
conscious and unconscious minds that helps us handle the truth of our existence.  
This feat is even more laborious for the contemporary woman/man who has lost  
her/his spirituality and lives in a time driven by so called  
free-markets and other individualistic pursuits.

My work explores the relationship between these two opposite worlds  
(reality and imagination ; conscious and unconscious mind), with a plastic approach:  
through the use of a minimal an empty yet saturated composition;  
by layering faded lines with heavy forms; by organic and geometrical elements.

The weaving technique that I use symbolizes unification between them.  
By using two separate parts, I create a new entity  
that symbolizes our identity filled with many complexities.



ENTRE DEUX  
*IN BETWEEN*

150 cm x 118 cm

oil painting and acrylic  
on canvas



EFACE  
*FADING*

169 cm x 134 cm

oil painting and pencil  
on canvas





EN ATTENDANT  
*MEANTIME*

110 cm x 125 cm

oil painting + pencil and  
weaving on canvas





VOLONTE  
*WILLINGLY*

150 cm x 130 cm

oil painting + acrylic and  
weaving on canvas



ENTRE PLUSIEURS  
*BETWEEN SEVERAL*

162 cm x 160 cm

oil painting + pencil and  
weaving on canvas





PRESENT  
*PRESENT*

164 cm x 128 cm

oil painting + pencil and  
pastel on canvas



ETUDE DE L'ORGANIQUE  
*STUDY OF THE ORGANIC*

51 cm x 38 cm

pastel and colour pencil on paper



ETUDE DE LA TIMIDITE  
*STUDY OF SHYNESS*

42 cm x 30 cm

colour pencil and weaving on paper





ETUDE D'UNE DISCTINCTION  
*STUDY OF A DISCTINCTION*

38 cm x 56 cm

colour pencil and weaving on paper



ETUDE DE L'INHIBITION  
*INHIBITION STUDY*

60 cm x 51 cm

colour pencil and folding on paper



ETUDE D'UN AGGLOMERAT  
*STUDY OF AN AGGLOMERATE*

54 cm x 45 cm

colour pencil + acrylic  
and weaving on paper



ETUDE D'UNE FOCALISATION INTERNE  
*STUDY OF AN INTERNAL FOCUS*

76 cm x 51 cm

pastel and weaving on paper



INES KATAMSO

*www.ineskatamso.ART*

*hello@ineskatamso.ART*

*@ineskatamso*

*STUDIO :*

*Jl Drupadi 1 no 11B*

*80361 BALI*

*INDONESIA*